

16-17 MAY 2018

MERCURE BRISTOL GRAND HOTEL

#SOUTHWEST2018



Chartered  
Institute of  
Housing



# SOUTH WEST 2018

THE BIGGEST AND BEST HOUSING EVENT IN THE SOUTH WEST.

## PROGRAMME

WEDNESDAY 16 MAY

08:30 **DELEGATE REGISTRATION**

Sponsored by Stonewater



08:30 **REFRESHMENTS AND EXHIBITION VIEWING**

10:00 **CONFERENCE WELCOME**

Barbara Shaw, *chair of CIH south west regional board*

10:15 **OPEN KEYNOTE: HOUSING - THE BIGGER PICTURE**

Terrie Alafat CBE, *chief executive, Chartered Institute of Housing*

Housing is higher on the political agenda than it has been for some time. CIH chief executive Terrie Alafat CBE will give us her take on the key challenges - and opportunities - for housing professionals and providers

10:45 **KEYNOTE: DIGITALISATION**

Georgie Barrat, *technology journalist and broadcaster*

How can you embrace digital transformation to better understand your customers, engage with millennials and meet their expectations and successfully implement social media?

In this keynote tech journalist Georgie Barrat talks through future tech trends, practical tips and industry case studies to help your organisation thrive.

11:30 **REGIONAL AWARD PRESENTATION**

11:45 **REFRESHMENTS AND EXHIBITION VIEWING**

12:15 **FIRE SAFETY - BUILDING A SAFER FUTURE**



A Emma Hammond, *Hammond Consultants*

Dame Judith Hackitt's interim independent review of Building Regulations and Fire Safety was published in December 2017. Its main focus is on the application of these regulations to high rise and complex residential buildings. However, the final report is due in Spring 2018 and we know that there will be major implications for us all. Emma will bring her breadth of experience in setting up systems to capture all FRA's, dynamic management of actions, reporting assurance and company wide ownership of actions. Come along and listen to the experts and what the recommendations could mean for your organisation.

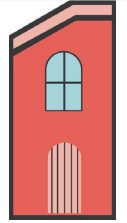
Learn with us. Improve with us. Influence with us  
www.cih.org • 024 7685 1700



**B TENANCIES OF THE FUTURE**

**Diana MacLean**, *assistant director of housing (policy and performance)*  
Radian Group

Fixed term tenancies have been the subject of debate since they were introduced in 2011. Should we use them or shouldn't we. This is an opportunity to hear from organisations that have implemented this approach and are now starting to realise the impact this change has had on families and communities. Have they been the catalyst for households to move on into market housing once they have had that initial help or are they just more administration?

**C LOCAL HOUSING COMPANIES**

Chair: **Mike Ash**, *CIH south west board*  
**Adam Gatier**, *commercial manager, Swindon Borough Council*  
**Cllr Paul Smith**, *Bristol City Council*

Councilor Smith will discuss the challenges and opportunities of setting up a local housing company in Bristol, and how, by working in partnership, the city is able to create more affordable homes.

**D DRIVING SOCIAL MOBILITY**

**Sam Leigh**, *executive director of service transformation - Yarlington Housing Group*

Sam will explore and share with you the different ways that Yarlington is empowering its customers, developing skills and capacity building to inspire and create opportunities. Through both its successful digital agenda and subsidiary organisation, Inspired to Achieve, Sam will give some insight in to the possibilities and challenges.

**13:15 LUNCH AND EXHIBITION VIEWING****14:15 KEYNOTE: REGENERATION OR GENTRIFICATION**

**Victor De Cunha**, *chief executive, Curo*

We've all bought into profit for purpose but some say we have gone too far! The gentrification of neighbourhoods has meant that the less affluent have lost out to the affluent with examples such as Notting Hill and Elephant and Castle being cited. Come along and listen to Victor De Cunha, CEO of Curo who operate in Bath and why Curo's work at Mulberry Park is not gentrification but the regeneration of an area where everyone will benefit

**15:15 REFRESHMENTS AND EXHIBITION VIEWING****15:45 MASTERCLASS SESSIONS**

**A STRATEGIC ASSET MANAGEMENT - YOUR JOURNEY AND THE ESSENTIAL COMPONENTS**



**Mike Victory-Rowe**, *director and asset management consultant - Box Rocket Ltd*  
**Rose Bean**, *head of assets - Yarlington Housing Group*  
**Richard Medley**, *director- Housing Dynamics*

Getting the 'what' and 'why' of your approach to developing and delivering your Asset Management Strategy right is essential, if it is to successfully support the delivery of your wider business priorities. Understanding where you are now on this journey, where you want to be - and how you can get there - is critical.

We will explore the essential components of asset management to create a tool box which allows you to deliver strategic asset management - supported by data and business intelligence, asset performance and property standards, with a strong focus on value for money in property investment and option appraisals.

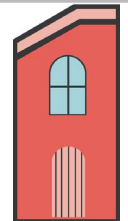
**B OLDER PEOPLES HOUSING**



**Lex Cumber**, *business development director, Castleoak Group*

The population is ageing and the 'baby boomer' generation are clear sheltered housing is not what they want. So as providers how are we meeting their demands and those of their parents who are living longer but are frail?

**C JOINT VENTURES**



**Clare Crawford**, *business development and Investment director - partnerships and regeneration - Galliford Try*

Galliford Try is a leading Developer and Contractor, and is trailblazing when it comes to Joint Ventures. Clare will share some of her wisdom and experiences in partnering with housing providers to deliver more homes.

**D FINDING SOLUTIONS TO THE SKILLS GAP**



**Fiona McMillan**, *board member - EDF*

How do we ensure we have the skills required in our organisations to deliver new business models and attract talented people? What part do apprenticeships play in this role and how can further education help us? Dr Fiona McMillan will share her experiences as Ex-Principal of Bridgewater College and board member of EDF Energy's Nuclear New Build GenCo as adviser on skills, training and people development.

**E 'WHEN YOU SAY 'AFFORDABLE...?'**



**Claire Powell**, *strategy and research director, Sovereign*

What exactly do we mean by an affordable rent? In this session, we'll look at different approaches to defining affordability, and what they mean in reality. We'll share some of Sovereign's research in this area, and consider its implications for rent setting and new development in practice.



**16:30 CLOSING KEYNOTE: MINORITY REPORT**

**Nick Horne**, *chief executive officer - Knightstone*

There's been lots of discussion about mergers in the sector from those who are the senior partners but come and hear the perspective of the junior partner in a merger. Nick Horne, CEO at Knightstone, will share his views on the recent merger with DCH.

**17:15 NETWORKING DRINKS RECEPTION**

Sponsored by Lovell

**LOVELL**

**18:30 CLOSE OF DRINKS RECEPTION**

**22:00 CELLAR AFTER PARTY**

**until late** including complimentary drink on arrival  
Sponsored by BRC





# SOUTH WEST 2018

THE BIGGEST AND BEST HOUSING EVENT IN THE SOUTH WEST.

## PROGRAMME

THURSDAY 17 MAY

08:30 DELEGATE REGISTRATION

Sponsored by Stonewater



08:30 REFRESHMENTS AND EXHIBITION VIEWING

09:30 CONFERENCE WELCOME

Barbara Shaw, *chair of CIH south west regional board*

09:45 KEYNOTE: RSH REGULATIONS

Fiona Underwood, *co-chief executive, Altair Ltd*

Jonathan Walters, *deputy director strategy and performance, Regulator of Social Housing*

A year in regulation is a long time. Come and listen to the latest update from Jonathan Walter, Deputy Chief Executive of the RSH as he talks to us about an independent organisation paid for by fees, the VFM standard, a new chair, their on-going relationship with government and regulating a changing sector.

10:30 KEYNOTE: BUILDING CAREERS FOR YOUNG PEOPLE

Natasha Jarratt, *CIH Futures*

How do we ensure we attract and retain young people within the housing sector? In this session Natasha of CIH futures addresses the values, behaviors and ambitions of young people and what organisations can do to encourage and nurture this talent to ensure the future of the housing sector is as diverse as the tenants and communities they work for.

11:30 REFRESHMENTS AND EXHIBITION VIEWING

12:00 MASTERCLASS SESSIONS

A ASSET MANAGEMENT



Richard Hand, *Ridge*

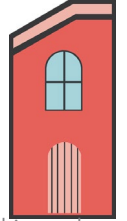
There is an increasing focus on fire safety in our buildings and rightly so. With a greater awareness of and understanding of Fire Risk Assessments, Richard will explore compartmentation in buildings and how this can be achieved.



**B HOMELESSNESS REDUCTION ACT**

**Nicola Forsdyke**, *homelessness advice and support team, MHCLG*  
**Stuart Bakewell**, *head of support services, Westward Housing*

Homelessness is rising, exacerbated by a shortage of social housing, cuts to welfare benefit and stagnating incomes. What are the implications of the Homelessness Reduction Act for councils and how are organisations responding to assisting those on the streets and working to preventing homelessness.

**C MMC FOR THE NEXT GENERATION**

**Tom Wimshurst**, *director, Wimshurst Pelleriti*  
**Will Wimshurst**, *director, Wimshurst Pelleriti*

With a national housing shortage, pressure on skills in the construction industry and a generation of millennials struggling to access homes they can afford, Will and Tom will introduce 'Launchpod', a modular self contained affordable home.

**D LOCAL HOUSING ASSOCIATIONS: WHAT DO THEY OFFER**

**Peter Moore**, *chief executive, Cornwall Rural Housing Association*  
**Donna Johnson**, *chief executive, South Western Housing Society*

Housing need far outstrips supply and in times of merger there is room and arguably an increasing role for smaller housing associations. Peter and Donna will explore the role that local housing associations can and do play, the challenges, and the opportunities.

**E SECURING YOUR SYSTEMS**

**Jason Hart**, *ethical hacker*

Jason is an ethical hacker who provides advice and guidance around the world to global companies including BBC, ITV, CNN and Fox News. A founder and visionary of some of the leading security solutions and packages including cloud based security authentication services. Come along and hear Jason talk and ask how secure are your systems and data?

**13:00 LUNCH AND EXHIBITION VIEWING****KEYNOTE: MILLENNIALS**

**Oona Goldsworthy**, *chief executive officer - United Communities*  
**Dom Wood**, *chief executive officer - 1625 Independent People*

As we face increasing demands for housing, Oona and Dom will explore the options for housing for millennials and talk to us about how their two organisations are working together to find solutions.

**14:40 REFRESHMENTS AND EXHIBITION VIEWING**

**15:00 HOUSING IS CHANGING: HOW ARE WE RESPONDING?**

**Chris Buckle**, *director residential research, Savills*  
**Robert Grundy**, *head of housing, Savills*

Chris and Robert will discuss the major piece of research Savills and Social Housing have done to establish how housing is changing and how, as a sector, we are responding.

---

**15:45 CLOSING KEYNOTE:**

**Barbara Shaw**, *chair of CIH south west regional board*

**16:00 CLOSE OF DAY 2**

*\* Programme and speakers may be subject to minor changes*

