

WE BUILD  
**GREAT HOMES**  
AND SUPPORT  
**SUCCESSFUL**  
**LIVES** BY BEING  
A **BETTER**  
**BUSINESS**



Our most powerful asset  
is our purpose, it  
illuminates everything we  
do and fires our passion  
and commitment.

## Strategic Objectives

### Great Homes

Up to 1000 new homes

Rooftop Living Home  
Standard

### Successful Lives

Excellent Customer  
Service

Building Stronger  
Communities

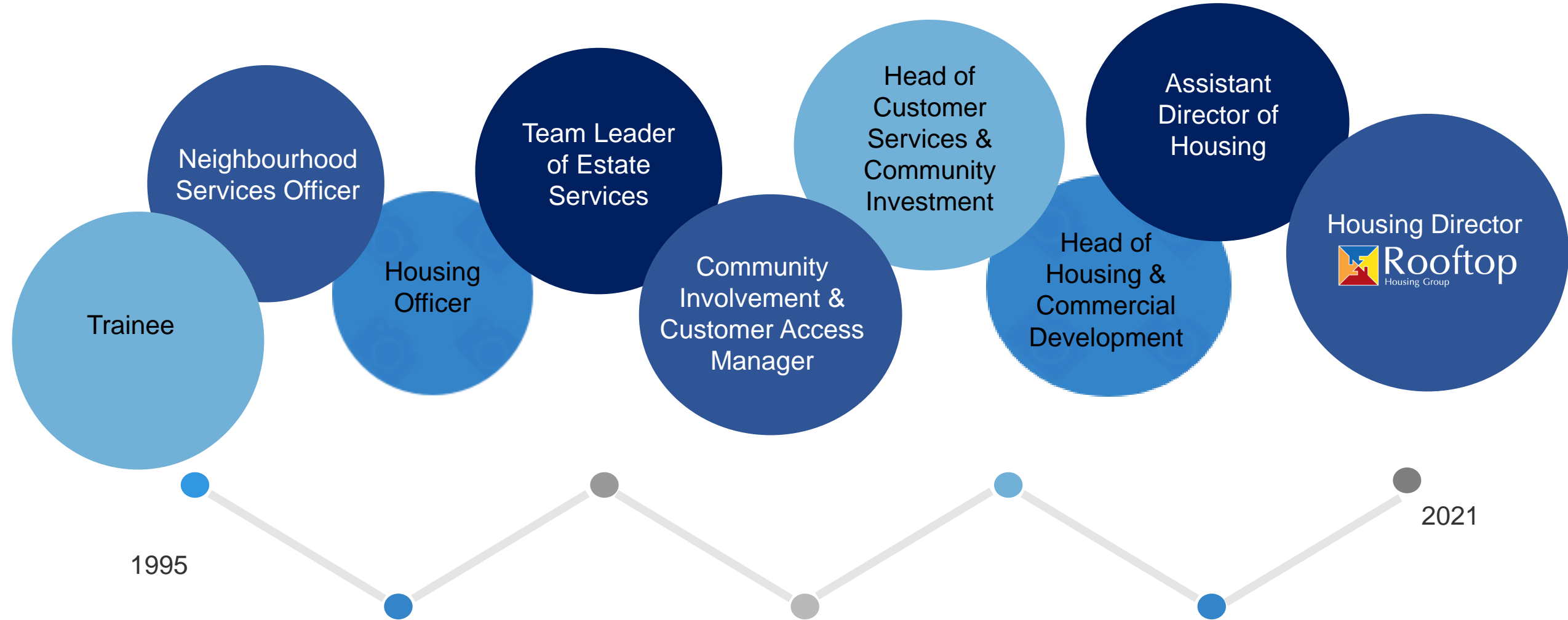
### Better Business

Leadership and Learning  
Excellence

Digital by Design

# Opportunities in Social Housing





WE BUILD  
**GREAT HOMES**  
AND SUPPORT  
**SUCCESSFUL**  
**LIVES** BY BEING  
A **BETTER**  
**BUSINESS**



Our most powerful asset  
is our purpose, it  
illuminates everything we  
do and fires our passion  
and commitment.



### Strategic Objectives

Great Homes	Successful Lives	Better Business
Up to 1000 new homes	Excellent Customer Service	Leadership and Learning Excellence
Rooftop Living Home Standard	Building Stronger Communities	Digital by Design

Ip people



**We invest in people**

creative



**Every day is different**



**We provide homes**



**We support communities**



Chartered  
Institute of  
Housing

# National Careers Week

**Rebecca Clarke, head of membership**



Chartered  
Institute of  
Housing

“The Sky is not the limit, it’s just the beginning”

# A home for everyone...



- Over 150,000 people working in housing associations alone in the UK
- Over 5 million socially rented homes in the UK
- Housing is a highly skilled and diverse profession
- World of opportunity as the sector diversifies

Do something with a purpose

# Found 190 jobs

Browse

Search

Keywords

e.g. Housing manager

Location

e.g. London

Within 10 miles

☐ Homeworking

► Function

► Seniority

► Salary Band

► Contract

► Hours

► Organisation Type

► Recruiter Type

Search

## Customer Services Director

- Bristol
- £67,000 - £75,000
- Morgan Law



As our new Customer Service Director, you will lead the transformation of our services to meet the ambition within our...

[View details](#)

5 days left

[★ Save](#)

## Head of Governance & Strategy

- Gateway Plaza, Barnsley / Agile Working
- £52,980 to £57,596 per annum
- Berneslai Homes



As Head of Governance & Strategy you will be part of our new Senior Management Team.

[View details](#)

2 days left

[★ Save](#)

## Customer Support Officer

NEW

- Oldham - Bower House
- £30,867 per annum
- The Guinness Partnership



We have an exciting opportunity for a Customer Support Officers to join our team in Oldham on a full time basis for a period of up to...

[View details](#)

6 days left

[★ Save](#)



CLARION  
HOUSING GROUP

**Stevenage**  
BOROUGH COUNCIL

VISIT US

**Hightown**

VISIT US





Chartered  
Institute of  
Housing

“You can do more for someone as a housing professional in one day than what other professions can do in a whole lifetime” – *Jim Strang, CIH President 2019-20*

# Poll time!



Chartered  
Institute of  
Housing

## How much do you know about housing as a career?

<https://www.surveymonkey.co.uk/r/W3NKVM5>



Hyde

# Social housing: great sector, fantastic careers

Sue Bunt  
Head of Organisational Development

# About me

- 15 years in social housing in OD roles
- Love working somewhere where a sense of purpose is both a draw and a reason to stay
- Career coach





# Our homes and communities





# Our staff



# What roles are available in social housing?

Housing offers many different roles and career paths

At Hyde we invest in our people. We want them to have great jobs, great development and fulfilling careers

HR	Plumber	Caretaker
Welfare adviser	Procurement	Electrician
Land buyer	Policy	Facilities
Administrator	Customer service	Health and safety
Financial assistant	Communications	Project manager





# Ashley

Joined Hyde in 2015 and has advanced his career quickly. Ashley was Hyde Apprentice of the Year award in 2016 and also won the CIH Southern region apprentice of the year.

He is a reverse mentor for the chief executive of another housing association and sits on Hyde's junior board

*“Social Housing has given me the opportunity to develop professionally and achieve success whilst having a positive impact both within the sector and in society.”*

## 2015

Joined Hyde as an apprentice

## 2016

Successfully appointed to first permanent job as an administrator

## 2018

Promoted to become a Lettings Officer

## 2019

Promoted to Property Manager





# Subhatra

Joined in 2018 and is a trainee construction project manager

*"I am proud and privileged to work at Hyde. I have had opportunities to explore different areas within the business, enabling me to develop my career within property. The support, culture and people at Hyde are inspiring, encouraging and progressive."*

## 1999

Completed degree in Property & Estate Management followed by several years working in this field

## 2006

Moved to Cyprus with family. Retrained as a teacher and taught for a couple of years

## 2014

Returned to work in property, working in block management for a small company

## 2018

Joined Hyde as a property manager

## 2019

Internal move to trainee construction project manager



# Kate

Joined Hyde from university in 2004 and has made a successful career in policy and strategy

*“I love the ethos of the sector and the sense that I am part of something positive for people and communities; but it’s the variety that has kept me interested all these years. There is always something new to learn and so many disciplines and different career paths people can follow. It’s never boring!”*

## 2004

Joined Hyde as a Continuous Improvement Assistant and then held various policy/research roles

## 2014

Became Head of Strategy & Business Intelligence

## 2018

Returned from maternity leave and was promoted to Partnerships and Regeneration Director

## 2019

Became Strategy & Partnerships Director

# Future work skills: 9 Cs and 3 Ds



Source: Futureproof your career John Fitzgerald

# Poll time!



Chartered  
Institute of  
Housing

## How much do you know now about housing as a career?

<https://www.surveymonkey.co.uk/r/6T8JV8K>





# Thank you

[sue.bunt@hyde-housing.co.uk](mailto:sue.bunt@hyde-housing.co.uk)

[suebunt@northstarcareers.com](mailto:suebunt@northstarcareers.com)

# Championing Careers in Housing

5<sup>th</sup> March 2021

National Careers Week

**Lea Hampton**  
Employment &  
Skills Manager  
- One Horton  
Heath,  
Eastleigh  
Borough  
Council



# One Horton Heath Development

- Mixed use development
- Build starting 2021 to 2035
- Over 2,300 homes, primary school, commercial and small industrial units, community centre
- Large areas of open space, open pathways and woodland cycle paths across 310 acres





# Career Journey

Self-employed  
LAMDA teacher  
in London  
schools

Careers Co-  
Ordinator &  
Project Lead in a  
secondary school  
in New Forest

Communities  
Officer  
Housing  
Association

Senior Project  
Development  
Officer  
County Council

Employment &  
Skills Manager –  
One Horton  
Heath  
Eastleigh BC

Level 4 in  
Advice &  
Guidance  
Volunteer  
Simon Says  
Charity

Ambassador  
National Careers  
Week

Trustee SAMEE  
charity  
Level 6 Careers  
Development &  
School Governor

Member IEP &  
ERSA  
Advisor to CIH  
Employability  
Mentor & Coach

# Job role resources – Jobs in a Box

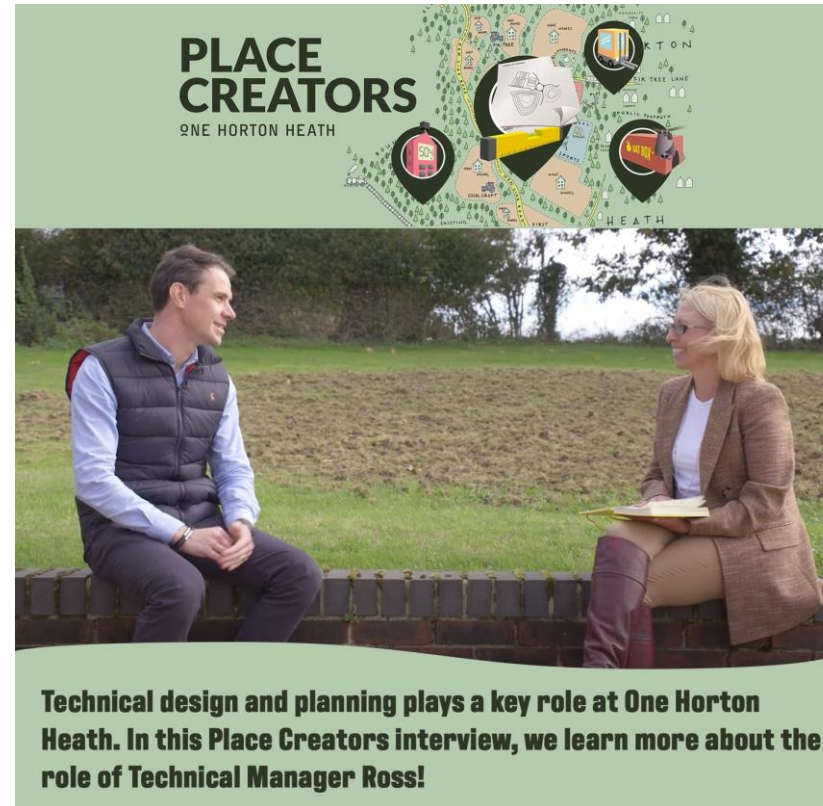
Dressing up, role play and tasks associated with housing roles; community development, housing officer, customer service, development. We deliver a workshop and then the box stays in the school for 4 weeks. We then return with professionals from HAs.





# Job role resources – Place Creators

Interviewing various professionals involved in the One Horton Heath development. Initially the design / infrastructure phase, now moving on to the housing roles. Asking professionals about different routes in and learning pathways, how the role links to curriculum subjects, top tips and why they love their role.





“These Careers films are a remarkable achievement during the Pandemic and a fantastic resource to share with young people; National Careers Week is grateful for the hard work and vision that have resulted in some truly excellent work.” Nick Newman, Founder & CEO National Careers Week

<https://www.eastleigh.gov.uk/employment-and-skills/place-creators-one-horton-heath>

Email:

[Lea.Hampton@eastleigh.gov.uk](mailto:Lea.Hampton@eastleigh.gov.uk)

Twitter:

@LeaAHampton

LinkedIn:

Lea Hampton